


Scepter II

Product Type	Broadloom	
Style Number	50521	
Construction	Solid Cut	
Fiber	Nylon	
Primary Backing	Polypropylene	
Secondary Backing	Classicbac®	
Protective Treatments	SSP® Shaw Soil Protection	
Recommended Adhesive	H1000, H1200 or H3800	
	u.s.	metric
Product Size	12 ft	3.66 m
Gauge	1/10 in	39.4 per 10 cm
Stitches	11.5 per in	46.0 per 10 cm
Average Density	6222 oz/yd³	0.23 g/cm³
Kilotex		10.97
Total Thickness	0.401 in	10.19 mm
Tufted Weight	42 oz/yd²	1424 g/m²
Installation Pattern Repeat		None



Recommended Installation Method

Direct Glue, Double Glue, Stretch-In

Data + Testing

Pill Test	Pass
Radiant Panel	Class I
Nbs Smoke	Less Than 450
Electrostatic Propensity	Less Than 3.5 kv
Cri Green Label Plus (Glp)	GLP8878
Ada Compliance	>0.6, Meets the recommended static coefficient of friction for ADA walking surfaces and accessible routes***

Test Reports may be included or listed by the manufacturing/inventory style number as opposed to the noted selling style number.

Warranties

10 Year Commercial Limited

Material Health & Environmental Certifications

Health & Wellbeing

Material Ingredient Transparency

Cradle to Cradle Certified® | Silver Level (Version 3.1)
NSF 140 | Gold

Indoor Air Quality

CRI Green Label Plus (GLP) | GLP8878

Climate Impact

Environmental Product Declaration (EPD)

3rd Party Certified in Accordance with ISO14044, ISO14025 & EN15804

Total Recycled Content

<1% (Pre-Consumer <1% | Post-Consumer 0%)

Product Packaging

100% Recyclable

Global Product Assessment

CE Marking (EN 14041) | 3rd Party Certified

Environmental Guarantee* | Re[turn] Reclamation Program* | Pickup & Delivery Available

Country of Origin** | USA

Green Leed Contribution Credit

MR Credit: Building Product Disclosure and Optimization
Environmental Product Declarations - Option 1: Environmental Product Declaration (EPD)

3rd Party Certified in Accordance with ISO14044, ISO14025 & EN15804

MR Credit: Building Product Disclosure and Optimization
Material Ingredients - Option 1: Material Ingredient Reporting

C2C Silver Level (Version 3.1)


MR Credit: Building Product Disclosure and Optimization
Material Ingredients - Option 2: Material Ingredient Optimization

C2C Silver Level (Version 3.1)

EQ Credit: Low Emitting Materials
Option 1: Product Category Calculations

Green Label Plus Certification: GLP8878

Available Colorways

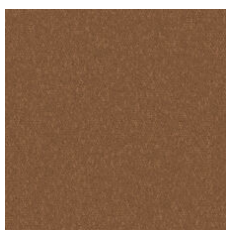
 Ivory 43101 LRV 41.6	 Canvas 43106 LRV 31.9	 Hazelnut 43111 LRV 22.1	 Buttercream 43115 LRV 30.4	 Water Chestnut 43120 LRV 21.6	 Sorbet 43135 LRV 21.1
 Mushroom 43150 LRV 21.9	 Pebble Beach 43155 LRV 16	 Puma 43193 LRV 12.2	 Lemon 43201 LRV 31.9	 Sunshine 43202 LRV 23.9	 Gold Run 43220 LRV 13.8

					
Wheat Field 43230 LRV 17.2	Midas 43235 LRV 22.1	Lime 43301 LRV 20.6	Retro 43302 LRV 16.1	Seacrest 43306 LRV 14.7	Denver Pine 43308 LRV 7.7
					
Elephant 43309 LRV 5.4	Grenada 43314 LRV 5.6	Tundra 43315 LRV 8.8	Boxwood 43316 LRV 1.9	Basil 43319 LRV 3.5	Longhorn 43321 LRV 4
					
Sprout 43326 LRV 18.5	Cactus 43330 LRV 7.5	Mikado 43331 LRV 15	Sagebrush 43332 LRV 10.5	Shade 43340 LRV 7.5	Fern 43365 LRV 4.6
					
Avocado 43370 LRV 3	Moss 43371 LRV 14.8	Junglewood 43372 LRV 7.1	Black Forest 43375 LRV 3	Grass 43399 LRV 7.9	Delft 43401 LRV 9.2
					
Nautical 43409 LRV 3.7	Stonewashed 43416 LRV 21.2	Blue Pearl 43425 LRV 10.6	Gulf Stream 43445 LRV 8.2	Tonic 43462 LRV 3.7	Cobalt 43470 LRV 4.9

					
Indigo 43480 LRV 2.6	Sea 43484 LRV 11.8	Royal 43485 LRV 1.6	Blue Blazer 43490 LRV 2.9	Vivid 43491 LRV 6.7	Night Tide 43496 LRV 1.5
					
Coal 43500 LRV 2	Moonlight 43501 LRV 29	Silver Lining 43502 LRV 17.3	Nimbus 43504 LRV 15.2	Raven 43505 LRV 1.1	Dover 43506 LRV 15.7
					
Blizzard 43518 LRV 27.6	Cloud 43530 LRV 11.7	Khaki 43545 LRV 12.5	Cannon 43555 LRV 10.9	Winter Cloud 43575 LRV 9.6	Denim 43580 LRV 5.9
					
Gunmetal 43585 LRV 6.9	Charcoal 43597 LRV 4.6	Orange 43601 LRV 16.5	Fall 43606 LRV 8.3	Spice 43665 LRV 4.8	Antelope 43706 LRV 7
					
Antique Bronze 43707 LRV 6.1	Mahogany 43708 LRV 9.7	Everglade 43709 LRV 2.2	Chocolate 43711 LRV 2.2	Cattail 43713 LRV 5.3	Coffee 43750 LRV 2.8



Sesame 43755
LRV 13.4



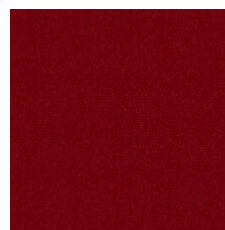
Suede 43760
LRV 6.7



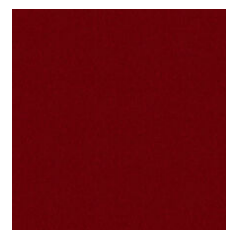
Twine 43761
LRV 4.3



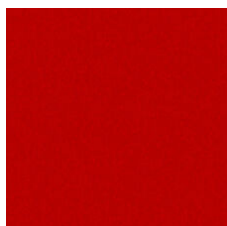
Hot Pink 43801
LRV 8.6



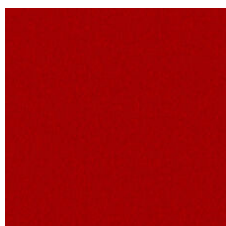
Henna 43855
LRV 1.9



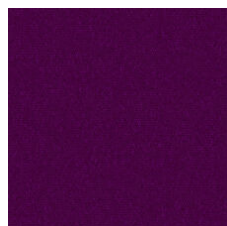
Cranberry 43860
LRV 2.4



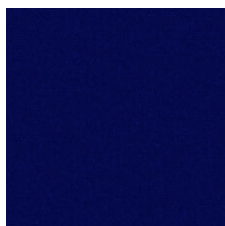
Red Soul 43861
LRV 6



Lipstick 43870
LRV 3.1



Emperor 43901
LRV 2.4



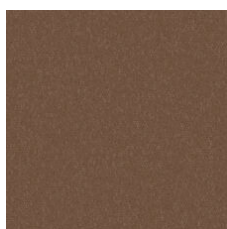
Bright 43903
LRV 2.9



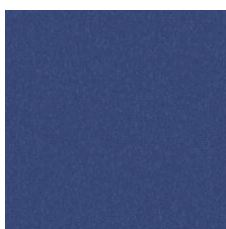
Haze 43904
LRV 8.1



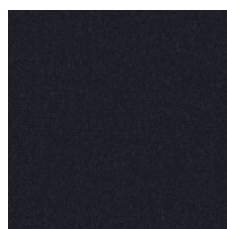
Garnet 43906
LRV 3.6



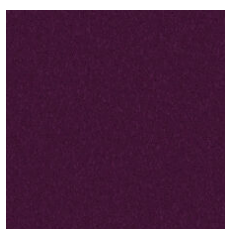
Old Spar 43910
LRV 9.3



Fresno 43920
LRV 9.9



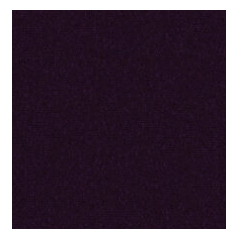
Aurora 43944
LRV 6.7



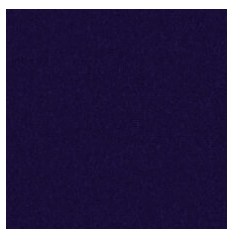
Muscadine 43979
LRV 2.9



Fresh Lilac 43981
LRV 20



Eggplant 43990
LRV 1.9



Violet 43993
LRV 3

Additional Information

* To learn more about the recyclability of our products and our Environmental Guarantee, please visit shawcontract.com/sustainability.

**Meets or exceeds all local and national regulations in country of manufacture. (Manufactured in an ISO 9001 & ISO 14001 certified facility or equivalent)

***This carpet is manufactured to be ADA compliant, but to be fully ADA compliant, the end-user must ensure the carpet is adhered to the floor and installed as outlined in the ADA standards.

[Installation Guidelines](#)

[Maintenance Guidelines](#)

Specifications are subject to nominal manufacturing variance. Material supply and/or manufacturing processes may necessitate changes without notice.

This product is an exclusive design and may not be duplicated in any manner. Use of this design in the creation of another product design is also strictly prohibited.

Visit shawcontract.com/testing for more information.



PVC-Free